

Clarke®



PARTS WASHER

MODEL NO: CWM20

PART NO: 7630925

ASSEMBLY & MAINTENANCE INSTRUCTIONS

UK
CA | CE



ORIGINAL INSTRUCTIONS

DL0822 - Rev 5

INTRODUCTION

Thank you for selecting this CLARKE Parts Washer. The CWM20 is ideal for garage/workshop use when cleaning smaller automotive and machinery components.

Before using the product, be sure to read these instructions thoroughly. In doing so you will ensure the safety of yourself and of others around you, and you can look forward to the product giving you long and satisfactory service.

GUARANTEE

This CLARKE product is guaranteed against faulty manufacture for a period of 12 months from the date of purchase. Please keep your receipt as proof of purchase.

This guarantee is invalid if the product is found to have been abused or tampered with in any way, or not used for its intended purpose.

Faulty goods should be returned to their place of purchase, no product can be returned to us without prior permission.

This guarantee does not effect your statutory rights.

SPECIFICATIONS & FEATURES

| | |
|-------------------------|---|
| Motor: | 230V, 1ph, 50Hz |
| Maximum Pump Capacity | 90 L/hour |
| Tank Capacity | 60 L / 16 Gal |
| Weigh carrying capacity | 50 Kg |
| Dimensions (L x W x H) | 985 x 540 x 930 mm (Lid Closed) 985 x 540 x 1410 mm (Lid Open) |
| Weight: | 33 kg |

- Accepts all common degreasing fluids.
- Fusible link automatically closes lid in case of fire.
- Easy maintenance solvent pump.
- Built-in replacable filter
- Easy maintenance solvent pump

SAFETY PRECAUTIONS



WARNING: AS WITH ALL EQUIPMENT, THERE ARE CERTAIN HAZARDS INVOLVED WITH ITS OPERATION AND USE. EXERCISING RESPECT AND CAUTION WILL CONSIDERABLY LESSEN THE RISK OF PERSONAL INJURY. HOWEVER, IF NORMAL SAFETY PRECAUTIONS ARE OVERLOOKED OR IGNORED, PERSONAL INJURY TO THE OPERATOR OR DAMAGE TO PROPERTY MAY RESULT.

1. **ALWAYS** learn the machine's applications, limitations and the specific potential hazards peculiar to it. Read and become familiar with the entire operating manual.
2. **ALWAYS** wear suitable protective clothing, gloves and goggles, manufactured to the latest European Safety Standards. Everyday eye glasses are not safety glasses.
3. **ALWAYS** clean off any accidental splashes of degreaser on the skin. Seek medical attention immediately if necessary.
4. **ALWAYS** follow degreaser manufacturer's instructions carefully.
5. **ALWAYS** check for damage before using the washer. Any damaged part, should be checked to ensure that it will operate properly and perform its intended function. Any damage should be properly repaired or the part replaced. If in doubt, DO NOT use. Consult your local CLARKE dealer.
6. **ALWAYS** disconnect the washer from the power supply before carrying out any maintenance.
7. **ALWAYS** keep the work area clean. Cluttered areas and benches invite accidents. Mop up accidental spillages of degreaser immediately.
8. **ALWAYS** ensure that adequate lighting is available. A minimum intensity of 300 lux should be provided. Ensure that lighting is placed so that you will not be working in your own shadow.
9. **ALWAYS** keep children away. All visitors should be kept a safe distance from the work area, especially whilst operating the machine.
10. **ALWAYS** maintain in top condition. Keep the washer clean for the best and safest performance.
11. **ALWAYS** ensure the switch is off before plugging in to mains. Avoid accidental starting.
12. **ALWAYS** concentrate on the job in hand, no matter how trivial it may seem. Be aware that accidents are caused by carelessness due to familiarity.
13. **ALWAYS** keep your proper footing and balance at all times don't over reach. For best footing, wear rubber soled footwear. keep floor clear.

ELECTRICAL CONNECTIONS




WARNING! READ THESE ELECTRICAL SAFETY INSTRUCTIONS THOROUGHLY BEFORE CONNECTING THE PRODUCT TO THE MAINS SUPPLY.

Before switching the product on, make sure that the voltage of your electricity supply is the same as that indicated on the rating plate. This product is designed to operate on 230VAC 50Hz. Connecting it to any other power source may cause damage.

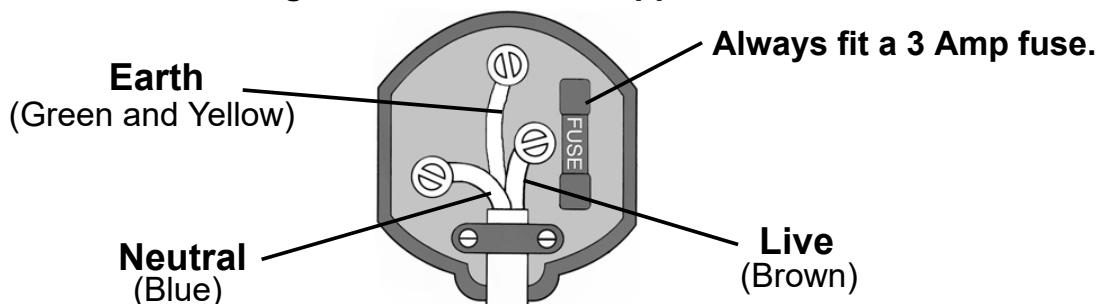
This product may be fitted with a non-rewireable plug. If it is necessary to change the fuse in the plug, the fuse cover must be refitted. If the fuse cover becomes lost or damaged, the plug must not be used until a suitable replacement is obtained.

If the plug has to be changed because it is not suitable for your socket, or due to damage, it should be cut off and a replacement fitted, following the wiring instructions shown below. The old plug must be disposed of safely, as insertion into a mains socket could cause an electrical hazard.

If the colours of the wires in the power cable of this product do not correspond with the markings on the terminals of your plug, proceed as follows.

- The **Blue** wire must be connected to the terminal marked **N** or coloured **Black**.
- The **Brown** wire must be connected to the terminal marked **L** or coloured **Red**.
- The **Yellow and Green** wire must be connected to the terminal marked **E** or  or coloured **Green**.

Plug must be BS1363/A approved.



Ensure that the outer sheath of the cable is firmly held by the clamp

We strongly recommend that this machine is connected to the mains supply via a Residual Current Device (RCD).

If in doubt, consult a qualified electrician. DO NOT attempt any repairs yourself

ASSEMBLY

1. Choose a firm, flat and level surface to site the parts washer on, in a well ventilated area and away from any naked flames.
2. Loosely bolt the supporting brackets to the side bars.
 - Do not tighten at this stage.



3. Bolt the tank loosely to the supporting brackets on each side bar.



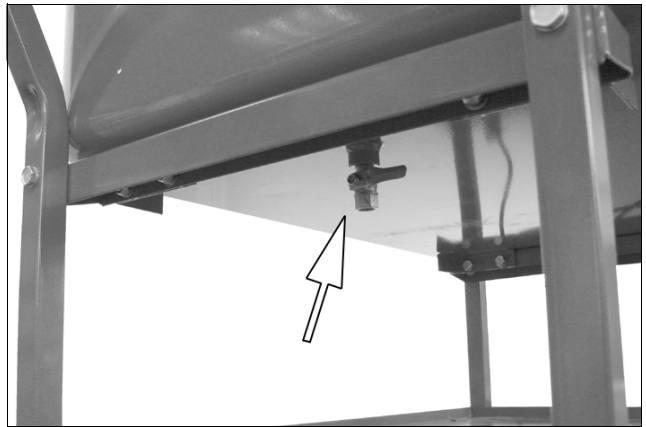
4. Loosely bolt the middle (draining) and lower trays to the side bars.
5. Finally tighten all bolts evenly across the whole assembly until secure.



6. Fit the castors to the side bars.



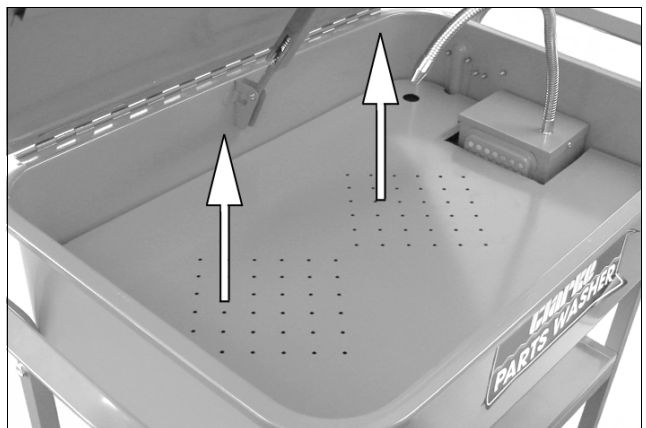
7. Fit the drain valve as shown.



8. Slide the oil tank into position.



9. Rest the part tray into position.



OPERATION

1. Open the tank lid and fill the tank with a nonflammable degreaser or cleaning agent, such as Clarke's degreaser, to just below the level of the parts shelf. **DO NOT fill with flammable solvents such as paraffin, thinners, etc.**
2. Insert the mains plug into a suitable mains outlet.
3. Using the On/Off button, switch the pump on. Hold the part to be cleaned under the flexible nozzle and slowly rotate the part until the part is clean.
4. When clean, leave the part to drain on draining tray until dry.
5. Switch off the pump, close the lid and disconnect the power supply.
6. Remove gloves and goggles and store safely.

NOTE: To prevent an accident, any spillages should be mopped up immediately.

IMPORTANT

1. The lid stay incorporates a safety device in the form of a thermally activated safety link, which closes the lid in the event of fire. The link is non-resetting and must be replaced in the event of it operating.
2. Do not allow the level of liquid in the parts washer to fall below the pump inlet, as damage to the pump can result.

ENVIRONMENTAL PROTECTION

Never throw away used oil with domestic refuse or flush it down a sink or drain. Collect any oil in a leak proof container & take it to your waste disposal site.

Through purchase of this product, the customer is taking on the obligation to deal with the WEEE in accordance with the WEEE regulations in relation to the treatment, recycling, recovery & environmentally sound disposal of the WEEE.

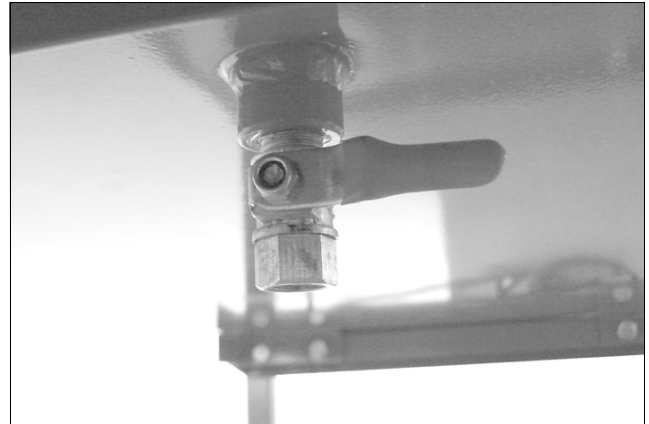
In effect, this means that this product must not be disposed of with general household waste but according to the laws governing Waste Electrical and Electronic Equipment (WEEE) at a recognised disposal facility.

Do not dispose of this product or damaged components with general household waste. All tools, accessories and packaging should be sorted, taken to a recycling centre and disposed of appropriately.

CLEANING AND MAINTENANCE

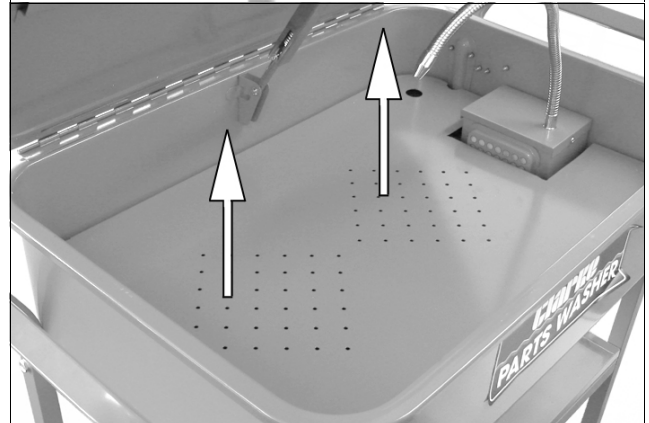
DRAINING THE TANK

1. Open the drain valve on the underside of the tank.
 - The liquid will drain onto the draining tray below and into the oil tank for disposal. Make sure that the oil tank does not over fill.

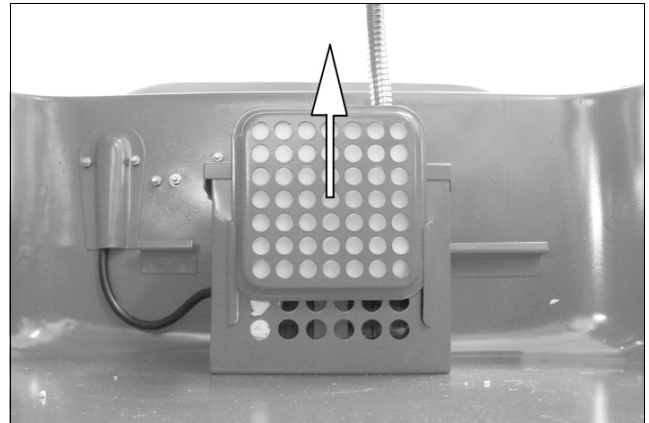


CHANGING THE FILTER

1. Lift out the parts shelf.
2. Slide the filter holder up from the pump as shown.



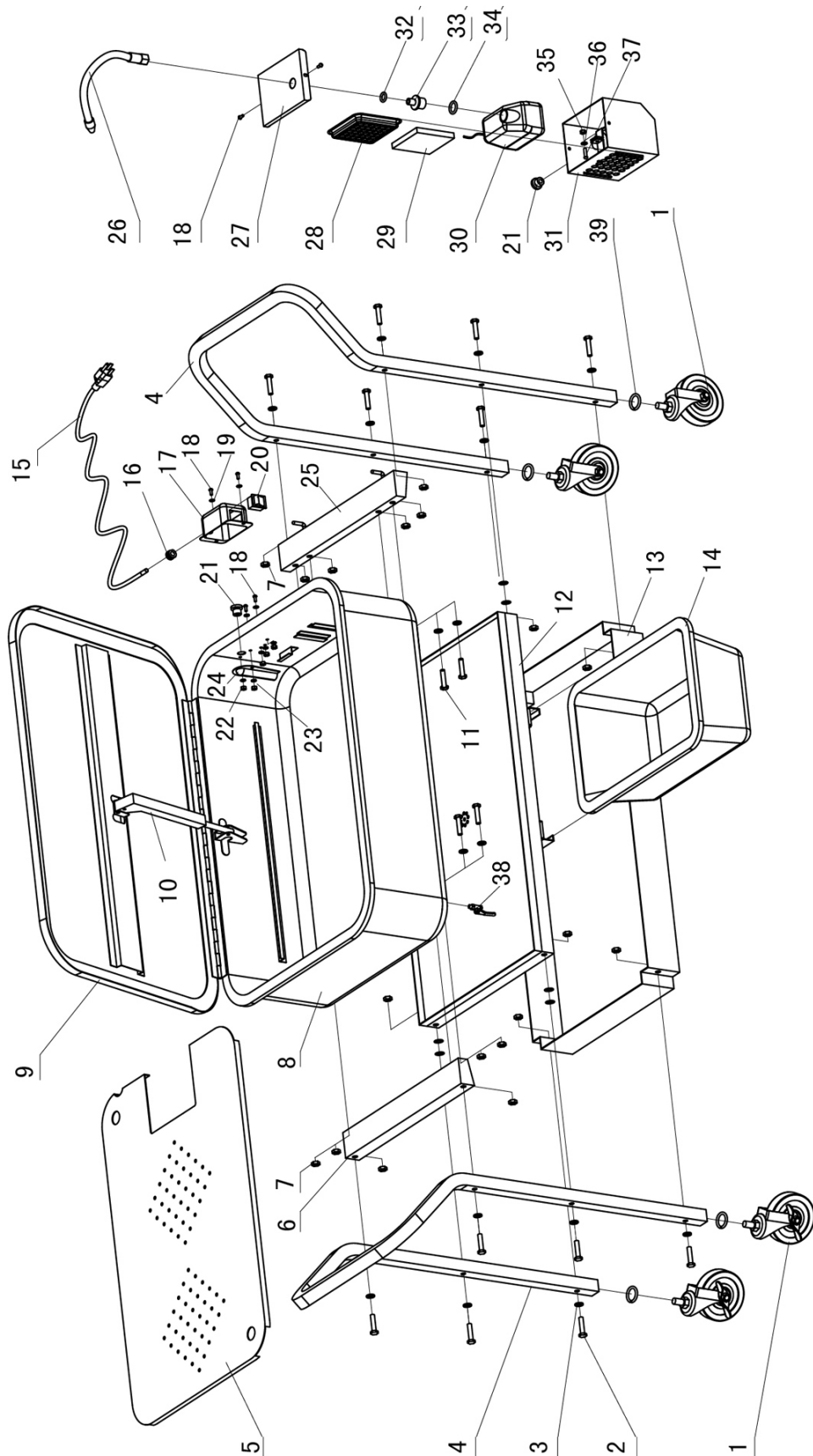
3. Remove the filter from the holder and replace.
4. Refit the filter holder.



Caution: Do not use the parts washer without the filter in place.



PARTS DIAGRAM



PARTS LIST

| No | Description | No | Description |
|----|----------------------------|----|-----------------------------|
| 1 | Castor | 21 | Wire guard |
| 2 | Hex bolt M8 x 40 | 22 | Nut M4 |
| 3 | Flat washer M8 | 23 | Spring washer |
| 4 | Side post | 24 | Flange (wire) |
| 5 | Parts shelf | 25 | Support bracket (righthand) |
| 6 | Support bracket (lefthand) | 26 | Flexible nozzle |
| 7 | Nut M8 | 27 | Pump housing cover |
| 8 | Tank | 28 | Filter cover |
| 9 | Tank lid | 29 | Filter |
| 10 | Fusible link | 30 | Pump assembly |
| 11 | Bolt M8 x 15 | 31 | Pump housing |
| 12 | Draining tray | 32 | Sealing ring |
| 13 | Lower Tray | 33 | Spigot |
| 14 | Oil tank | 34 | Sealing ring |
| 15 | Power cable | 35 | Nut M5 |
| 16 | Cable gland | 36 | Flat washer |
| 17 | Switch box | 37 | Screw M5 x 20 |
| 18 | Screw M4 x 10 | 38 | Drain valve |
| 19 | Flat washer M4 | 39 | Spring washer |
| 20 | On/Off switch | | |

CONSUMABLES

This parts washer is suitable for use with Clarke water-based parts washer fluid; Concentrated; P/No: 3051063 (5 Litre) P/No: 3051065 (25 Litre) - or Ready to Use; P/No: 3051064 (5 Ltr) P/No: 3051066 (30 Ltr)

These products are non-flammable and bio-degradable. We do not recommend the use of solvent-based parts washer fluids such as P/Nos: 3051115 and 3051120 with this parts washer.

DECLARATION OF CONFORMITY



Hemmall Street, Epping, Essex CM16 4LG

DECLARATION OF CONFORMITY

This is an important document and should be retained.

We hereby declare that this product(s) complies with the following statutory requirement(s):

- Electrical Equipment (Safety) Regulations 2016
- Electromagnetic Compatibility Regulations 2016
- Supply of Machinery Regulations 2008
- The Restriction of the Use of Certain Hazardous Substances in Electrical and Electronic Equipment Regulations 2012

The following standards have been applied to the product(s):

- EN 60204-1:2018, EN 60335-1:2012 + A11:2014 + A13:2017 + A1:2019 + A2:2019 + A14:2019,
- EN 60335-2-2:2010 + A11:2012 + A1:2013, EN 55014-1:2017 + A11:2020, EN 55014-2:2015,
- EN IEC 61000-3-2:2019, EN 61000-3-3:2013 + A1:2019.

The technical documentation required to demonstrate that the product(s) meet(s) the requirement(s) of the aforementioned legislation has been compiled and is available for inspection by the relevant enforcement authorities.

The UKCA mark was first applied in: 2022

Product Description: Floor Standing (Trolley) Parts Washer
Model number(s): CWM20
Serial / batch Number: N/A
Date of issue: 08/08/2022

Signed:

J.A. Clarke
Director



Fitzwilliam Hall, Fitzwilliam Place, Dublin 2

DECLARATION OF CONFORMITY

This is an important document and should be retained.

We hereby declare that this product(s) complies with the following directive(s):

- 2014/35/EU Low Voltage Equipment Directive
- 2014/30/EC Electromagnetic Compatibility Directive
- 2006/42/EC Machinery Directive
- 2011/65/EU Restriction of the Use of Certain Hazardous Substances in Electrical and Electronic Equipment (RoHS) Directive

The following standards have been applied to the product(s):

- EN 60204-1:2018, EN 60335-1:2012 + A11:2014 + A13:2017 + A1:2019 + A2:2019 + A14:2019,
- EN 60335-2-2:2010 + A11:2012 + A1:2013, EN 55014-1:2017 + A11:2020, EN 55014-2:2015,
- EN IEC 61000-3-2:2019, EN 61000-3-3:2013 + A1:2019.

The technical documentation required to demonstrate that the product(s) meet(s) the requirement(s) of the aforementioned directive(s) has been compiled and is available for inspection by the relevant enforcement authorities.

The CE mark was first applied in: 2022

Product Description: Floor Standing (Trolley) Parts Washer
Model number(s): CWM20
Serial / batch Number: N/A
Date of issue: 08/08/2022

Signed:

J.A. Clarke
Director

A SELECTION FROM THE VAST RANGE OF

Clarke®

QUALITY PRODUCTS



AIR COMPRESSORS

From DIY to industrial, Plus air tools, spray guns and accessories.

GENERATORS

Prime duty or emergency standby for business, home and leisure.

POWER WASHERS

Hot and cold, electric and engine driven - we have what you need

WELDERS

Mig, Arc, Tig and Spot. From DIY to auto/industrial.

METALWORKING

Drills, grinders and saws for DIY and professional use.

WOODWORKING

Saws, sanders, lathes, mortisers and dust extraction.

HYDRAULICS

Cranes, body repair kits, transmission jacks for all types of workshop use.

WATER PUMPS

Submersible, electric and engine driven for DIY, agriculture and industry.

POWERTOOLS

Angle grinders, cordless drill sets, saws and sanders.

STARTERS/CHARGERS

All sizes for car and commercial use.

PARTS & SERVICE: **0208 988 7400**

Parts Enquiries
Parts@clarkeinternational.com

Servicing & Technical Enquiries
Service@clarkeinternational.com

SALES: UK 01992 565333 or Export 00 44 (0)1992 565335

Clarke® INTERNATIONAL Hemnall Street, Epping, Essex CM16 4LG
www.clarkeinternational.com